



COMPASS

# Queens Luxury Report

June 23 - 29, 2025, Residential Contracts \$1.25M+

Photo: 46-30 Center Blvd, Unit PH8



The Queens luxury real estate market, defined as all properties priced \$1.25M and above, saw 17 contracts signed this week, made up of 7 condos, and 10 houses. The previous week saw 11 deals. For more information or data, please reach out to a Compass agent.

**\$1,574,889**

Average Asking Price

**\$1,375,000**

Median Asking Price

**\$1,215**

Average PPSF

**1%**

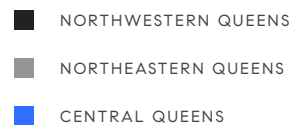
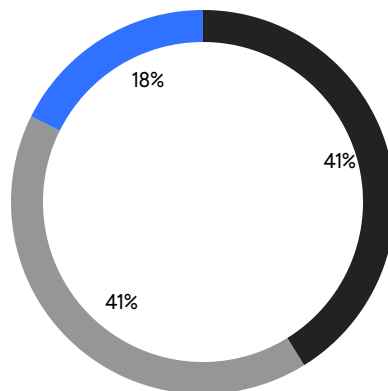
Average Discount

**\$26,773,105**

Total Volume

**41**

Average Days On Market



**7**

Condo Deal(s)

**0**

Co-op Deal(s)

**10**

Single-Family Deal(s)

**\$1,786,174**

Average Asking Price

**\$0**

Average Asking Price

**\$1,426,989**

Average Asking Price

**\$1,575,000**

Median Asking Price

**\$0**

Median Asking Price

**\$1,313,500**

Median Asking Price

**\$1,648**

Average PPSF

**\$879**

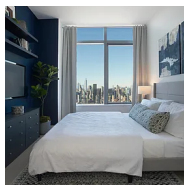
Average PPSF

**1,094**

Average SqFt

**1,788**

Average SqFt

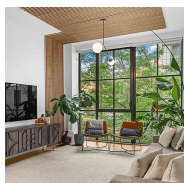


### 3 Court Square, Unit 6011

Long Island City

Contract Signed

Type	Condo	Price	\$2,898,217	Sq. Ft.	1,326	Beds	3
DOM	-	Initial	\$2,898,217	PPSF	\$2,186	Baths	2.5



### 22-18 Jackson Ave, Unit 208

Long Island City

Contract Signed

Type	Condo	Price	\$2,095,000	Sq. Ft.	1,520	Beds	3
DOM	11	Initial	\$2,095,000	PPSF	\$1,379	Baths	2



### 9-10 157th Street

Beechhurst

Contract Signed

Type	House	Price	\$1,798,000	Sq. Ft.	2,070	Beds	4
DOM	72	Initial	\$1,898,000	PPSF	\$869	Baths	3



### 11-36 45th Road, Unit 306A

Long Island City

Contract Signed

Type	Condo	Price	\$1,785,000	Sq. Ft.	1,108	Beds	2
DOM	8	Initial	\$1,785,000	PPSF	\$1,612	Baths	2



### 350 Park Lane

Douglaston

Contract Signed

Type	House	Price	\$1,700,000	Sq. Ft.	2,300	Beds	3
DOM	46	Initial	\$1,700,000	PPSF	\$740	Baths	3



### 83-14 Abingdon Road

Kew Gardens

Contract Signed

Type	House	Price	\$1,625,000	Sq. Ft.	3,480	Beds	4
DOM	7	Initial	\$1,625,000	PPSF	\$467	Baths	4

Compass is a licensed real estate broker and abides by Equal Housing Opportunity laws. All material presented herein is intended for informational purposes only. Information is compiled from sources deemed reliable but is subject to errors, omissions, changes in price, condition, sale, or withdrawal without notice. No statement is made as to the accuracy of any description. All measurements and square footages are approximate. This is not intended to solicit property already listed. Nothing herein shall be construed as legal, accounting or other professional advice outside the realm of real estate brokerage.



### 11-36 45th Road, Unit 604A

Long Island City

Contract Signed

Type	Condo	Price	\$1,575,000	Sq. Ft.	817	Beds	2
DOM	7	Initial	\$1,575,000	PPSF	\$1,928	Baths	2

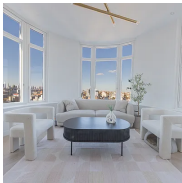


### 11-36 45th Road, Unit 404A

Long Island City

Contract Signed

Type	Condo	Price	\$1,525,000	Sq. Ft.	817	Beds	2
DOM	9	Initial	\$1,525,000	PPSF	\$1,867	Baths	2



### 29-18 41st Ave, Unit 14C

Astoria

Contract Signed

Type	Condo	Price	\$1,375,000	Sq. Ft.	966	Beds	2
DOM	55	Initial	\$1,375,000	PPSF	\$1,424	Baths	2



### 64-19 Marathon Parkway

Little Neck

Contract Signed

Type	House	Price	\$1,350,000	Sq. Ft.	1,104	Beds	4
DOM	12	Initial	\$1,350,000	PPSF	\$1,223	Baths	2

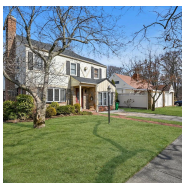


### 72-23 Kessel St

Forest Hills

Contract Signed

Type	House	Price	\$1,328,000	Sq. Ft.	1,560	Beds	3
DOM	25	Initial	\$1,388,000	PPSF	\$852	Baths	1.5



### 219-05 82nd Avenue

Oakland Gardens

Contract Signed

Type	House	Price	\$1,299,000	Sq. Ft.	1,536	Beds	3
DOM	59	Initial	\$1,299,000	PPSF	\$846	Baths	3

Compass is a licensed real estate broker and abides by Equal Housing Opportunity laws. All material presented herein is intended for informational purposes only. Information is compiled from sources deemed reliable but is subject to errors, omissions, changes in price, condition, sale, or withdrawal without notice. No statement is made as to the accuracy of any description. All measurements and square footages are approximate. This is not intended to solicit property already listed. Nothing herein shall be construed as legal, accounting or other professional advice outside the realm of real estate brokerage.





### 166-34 21st Ave

Whitestone

Contract Signed

Type	House	Price	\$1,298,888	Sq. Ft.	1,323	Beds	3
DOM	20	Initial	\$1,298,888	PPSF	\$982	Baths	2.5



### 58-12 264th St

Douglaston-little Neck

Contract Signed

Type	House	Price	\$1,298,000	Sq. Ft.	1,200	Beds	4
DOM	117	Initial	\$1,358,888	PPSF	\$1,082	Baths	2.5



### 69-44 172nd St

Fresh Meadows

Contract Signed

Type	House	Price	\$1,298,000	Sq. Ft.	-	Beds	3
DOM	163	Initial	\$1,400,000	PPSF	-	Baths	3

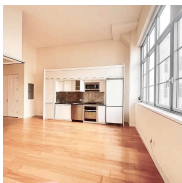


### 67-17 Harrow St

Forest Hills

Contract Signed

Type	House	Price	\$1,275,000	Sq. Ft.	1,512	Beds	3
DOM	20	Initial	\$1,275,000	PPSF	\$844	Baths	2.5



### 27-28 Thomson Avenue, Unit 434

Long Island City

Contract Signed

Type	Condo	Price	\$1,250,000	Sq. Ft.	1,100	Beds	2
DOM	21	Initial	\$1,250,000	PPSF	\$1,137	Baths	2

Compass is a licensed real estate broker and abides by Equal Housing Opportunity laws. All material presented herein is intended for informational purposes only. Information is compiled from sources deemed reliable but is subject to errors, omissions, changes in price, condition, sale, or withdrawal without notice. No statement is made as to the accuracy of any description. All measurements and square footages are approximate. This is not intended to solicit property already listed. Nothing herein shall be construed as legal, accounting or other professional advice outside the realm of real estate brokerage.